

THE ANGELUS

Volume 66 Number 6

Christ Episcopal Church • Winchester, Virginia

February 2016

Rector's Message

Dear People of Christ Church,

Our congregation is blessed to have families with long histories at Christ Church and also families who have joined us more recently from other parishes, other places, or other denominations. Every so often, I find that it is helpful to talk about our traditions here at Christ Church, especially around seasons such as Lent and Easter.

Lent begins with one of my family's favorite traditions, which is the Shrove Tuesday Pancake Supper. Beginning at 5:30 pm, the Vestry of Christ Church hosts this last chance to feast before Lent and feeds the flock of children and adults until 7:00 pm. Rather than sell tickets, we ask people to make a donation to cover our costs, with any additional proceeds benefitting our 2017 youth pilgrimage. Not only do we empty the pantry before Lent, but we also enjoy the fellowship among all ages.

The liturgical season of Lent begins with Ash Wednesday services. There is a 7:00 am service in the Pilgrim's Chapel for early risers. The services at Noon and 7:00 pm are in the Sanctuary. Yes, we do offer the option for the imposition of ashes if people wish to come forward to receive them. And no, not everyone comes forward because it is not a requirement of the service. It becomes that personal exploration of your piety as you engage the discipline of Lent and whether part of your preference includes ashes.

There are a couple of things to be aware of in our Sunday liturgy during Lent. If you come to the 10:30 am service on the first Sunday of Lent, we begin the service chanting the Great Litany in procession. This includes the choir and clergy chanting, while processing around the church. (Dr. Kriewald describes this as the "Anglican Pretzel," which you will understand when you participate in it.) Also, there are no "alleluias" in the church for all of the Sundays of Lent. Since Lent is a penitential season to prepare us for the event of Easter, we hold our alleluias until the Feast of the Resurrection. Also, for the same reason, the hymns and anthems during the services are more solemn in nature during Lent.

We always try to offer additional personal prayer practices for Lent. This year, we are following the program from the Society of St. John the Divine, which is a monastic community of The Episcopal Church and The Anglican Church of Canada. The program is called "Growing a Rule of Life," which can be followed individually with a group component one day a week, if people want to come. See Bridget's article on p. 3 for a more detailed explanation of the program.

Continued, p. 2

 **ASH**
Wednesday

February 10, 2016

Services at 7 am, Noon, and 7 pm

Contents

1	Rector's Message	9	Birthdays & Anniversaries
2	Rector's Message	10	Outreach
3	Assistant Rector's Message	11	Properties
4	Vestry News	12	Finance
5	Vestry News	13	Finance
6	Christian Formation	14	Parish News
7	Christian Formation	15	Parish News
8	Calendars	16	Nurse's Musings

From the Rector

We also offer daily Morning and Evening Prayer services during Lent on Monday through Friday in the Pilgrim's Chapel. These are led by Tom Ellington and Sue Jarvis. This is another way by which people can explore a Rule of Life, utilizing the daily office in our Book of Common Prayer.

Finally, we offer educational opportunities in Lent. One is the program, the Jesus Fatwah, which many in the congregation were not able to attend during our January Sunday morning Adult Forums. We will hold the program again on Sundays, February 7 through March 6, from 4:00 - 5:00 pm in the Parish Hall. See p. 7.

We will also have a Lenten program called, "Learning about our neighbor: A journey of interfaith relations." The first event in the program will be the Community Outreach Sabbath which Beth El is hosting on Friday, February 12. See p. 6 for details. Additional events in the program will be added, so please watch for announcements.

The wonderful services of Easter provide various ways to celebrate the resurrection of our Lord. We begin with the Great Easter Vigil and Holy Baptisms on Saturday, March 26, at 7:00 pm in the dark of the church, which then becomes light. On Easter morning, we gather with our ecumenical brothers and sisters at 6:30 am outside at the old Lutheran Church wall in Mt. Hebron Cemetery for a short sunrise service. Our own services to celebrate Holy Eucharist are at 7:30 am, 9:00 am and 11:15 am. If you want a quiet service, the 7:30 am service offers such a way to celebrate Easter. If you like the organ, brass and children's choirs in the service, our 9:00 am service offers that. And if you want the organ, brass, adult choir, and the opportunity to join in singing or listening in wonder and joy to Handel's Halleluiahs chorus, our 11:15 am service offers that.

Lent and Easter provide many ways for you to engage in the life, worship, and formation of our Christian faith here at Christ Church. We know that no one can do all of these. However, we also know it is important for us to find time to observe Lent and prepare for Easter. So, we hope you will join us when you can.

Faithfully,



The Rev. Webster Gibson, Rector
rector@christchurchwinchester.org



Walk to Jerusalem is a voluntary exercise program done during Lent. Any form of exercise which lasts 20 minutes earns you a mile. Keep track of your miles and submit them weekly. We put them all together and "walk to Jerusalem and back" on the map from February 10 (Ash Wednesday) until Easter Sunday! E-mail Helen at 1pnbutterfly@comcast.net if you want to join in. There will also be a sign-up sheet in the back of the church, and each Sunday you can log your miles by finding your number which is assigned to you and telling us how many miles you earned from Sunday to Saturday each week. Please contact Helen Zebarth in the Church Office if you have any questions!

From the Assistant Rector

Dear Friends in Christ,

Rule of Life. For many, the idea of developing a Rule of Life seems daunting. Of course, some of that hesitation might come simply from the word “rule” being used! In this case however, rule is used in such a way so that its meaning is not about strict or confining regulations; instead, this kind of rule is meant to mark guideposts that help us in all aspects of our life – spiritual, relational, and physical.

The first time I encountered the idea of creating a Rule of Life, I was skeptical about how it worked. I was encouraged by my spiritual director at the time to be gentle with myself and to start slowly. What I have learned since then is that my Rule of Life changes as my life and ministry change. It allows me to evaluate over and over what I value most and set out to live my life honoring those values. Currently, my Rule of Life includes praying the Daily Offices. For me, that means morning and evening prayer according to the Book of Common Prayer, journaling a reflection based on those prayers, exercising daily, eating based on a well-balanced nutrition plan, and being intentional with my relationships. On one hand, praying the Daily Offices has been a part of my Rule since my early days of discernment to the priesthood. I learn so much from that time spent with God and from reflecting on the scriptures and prayers. On the other hand, it has only been in the last eight months that I have added exercise and nutrition to my Rule, as some of you have noticed and mentioned. I came to a point last year of re-evaluating what mattered most to me and I found that I was not caring for my health as best I could, so I made some changes.

The idea behind developing a Rule of Life is to give ourselves a framework within which we can continue to grow into the people God is calling us to be. In her book, *At Home in the World: A Rule of Life for the Rest of Us*, Margaret Guenther writes, “A good rule is not a complicated ‘how-to’ manual, but a sheltering and sustaining *place*. A refuge—not for hiding or avoidance, but for gathering strength.” My experience of having a flowing Rule of Life is that it helps to keep me grounded and focused even as the storms of life occur. It helps me maintain my focus on God’s purposes and promises and calls me to be more attentive to listening for God’s voice.

This Lent, we are encouraging you to participate in an online series created by the Society of Saint John the Evangelist and the Center for the Ministry of Teaching at the Virginia Theological Seminary called, *Growing a Rule of Life*. Each morning of Lent, you’ll receive an email with a short video featuring one of the brothers of SSJE discussing various aspects of developing a Rule of Life. Using the free downloadable workbook, over the course of Lent, you will explore different facets of our relationships with God, with ourselves, with others, and with creation as you develop your own rule of life.

To sign up, please visit the website: <http://ssje.org/ssje/growrule/>

For those who would like to share what they’ve learned and discuss their thoughts from the videos, Webster or I will gather with those interested in the Smith Building Conference Room with brown bag lunches on Wednesdays during Lent after the Noon Eucharist. The first meeting will be Wednesday, February 17. We hope this will be a meaningful practice for you during this season.

Blessings,



The Rev. Bridget Coffey, Assistant Rector
bcoffey@christchurchwinchester.org

From the Vestry

From the Outgoing Senior Warden

I am coming to the end of another three-year term on the Vestry. This time, I had the pleasure to serve as the Senior Warden all three years. In that time, there have been many changes at Christ Church and we can be sure there will be changes as we go forward.

In the past three years, the parish successfully completed two fundraising campaigns for the building and for the organ. We have the Capital Campaign nearly paid off. And, we celebrated 45 years of service to our music program by Jim Kriewald. During this time, we balanced the budget, researched our funds and trusts to give better direction to future generations, and examined our physical facilities to begin planning for future upkeep and maintenance of our buildings. This has all been possible because of the wonderful people who volunteer their time and effort to see these projects through to the end. There are too many to name here and I know I would forget some of them if I tried. What is clear from examining the names of those involved is nearly everyone in the parish gave in some way to at least one of the programs at Christ Church. We are a very giving parish and we should celebrate this manifestation of Christ in us and in the world.

We are reminded by the Letter of James that faith alone is insufficient. James wrote “So faith by itself, if it has no works, is dead” (James 2:17, NSRV). As we move forward, we will need to discern how to solve other problems as they come along. We can only do this if we give of ourselves to continue the work we are given to do. If we have parishioners who accept leadership roles (elected or volunteer) and make those difficult decisions, there is nothing that will stop us from achieving our goals.

Thomas M. Ellington, Pharm.D., MA Min.



Highlights from January Meeting

- Finance Committee recommendations, including establishing a restricted endowment, funding work prioritized by the Properties Committee, and the 2016 budget, were approved. The Finance Committee was recognized for their outstanding work to get church finances organized and improve efficiency this past year.
- Doug Thomas presented a recommendation from Ruckman Engineering to reinforce the basement of the Smith Building. A motion was approved to accept the design, entertain bids, and start the work to clear out the basement for the work. (See p. 13.)
- The clergy reported that feedback for the “Loving your Muslim Neighbor” Adult Forum focus has been positive. This topic continues until Lent.
- The Vestry voted to give a gift of \$1000 to the Diocese of Virginia Mustard Seed Fund and \$500 to Episcopal Relief and Development to make impacts at both the national and international levels.
- The Vestry will host and staff the annual Shrove Tuesday pancake supper, which is scheduled during the Vestry’s usual meeting time. Thus, the Vestry will meet on Sunday, February 7, following the 10:30 am service.

Vestry Class of 2016



Ken Bradley has been a member of Christ Church for almost three years. He serves on the WATTS Operations committee and has been active in supporting Christ Church's planning and supply program for our WATTS week over that period. Ken brings many years of working with youth of all ages through coaching and mentoring in and outside the church. He has been married 40 years with four sons and three grandsons. He has been an active Episcopalian for 39 years. Ken has been in the IT field for 30 years, working with US Federal agencies and the DoD. He understands how today's IT technologies enhance communications and overall operational efficiency.

Joan Bronson has been a member of Christ Church for more than 40 years. She works at Handley Library and is on the board of the Friends of Handley Library. She lives downtown and enjoys walking. Joan serves on the Pastoral Care Committee, heading up the card ministry at Christ Church. She is also a First Night Winchester volunteer and Altar Guild member. She has one son, Robert. Joan enjoys the fellowship at Christ Church and looks forward to sharing her insight as a vestry member.



Bill Pifer has been a member at Christ Church since birth. He attends the 8:00 am service and serves as Prayers of the People reader. Formerly, he held positions including vestry member and Properties committee chair. Bill is self-employed in Winchester in business investment – primarily real estate interests. He is married to Kimberly Armstrong Pifer and they have two children, Emilie (12) and Lindsay (10). He serves on several boards including Shenandoah Valley Westminster Canterbury and Winchester Regional Airport Authority. Bill feels he can contribute to Christ Church by applying business and life experience as needed especially in financial and real estate/property areas.

Jody Wall is a lifelong member of Christ Church. She was baptized, confirmed, and married here. She has been actively involved in the parish. She currently serves on the Gifts and Memorials committee, is an Altar Guild member, a Parish Life Committee member, and serves as Coffee Hour Chair. Jody is employed by the Top of Virginia Regional Chamber, is a member and committee chair of the Kiwanis Club of Winchester, and is a recent member and committee chair of the Frederick County School Board (2008-2015). Dan Wall and Jody have been married for 25 years, and have one daughter Katlyn Wall, a 2014 graduate of Shenandoah University. To the vestry, Jody brings a lifelong love of Christ Church with a knowledge of its past, which provides insight into its future. Jody would like to help support current efforts to grow the congregation, provide outreach to the community, and make Christ Church relevant for future generations.



Christian Formation

Sunday School News

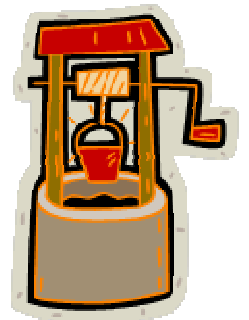
Are you already making summer plans? Then it's time to remember that *Cave Quest*, our Vacation Bible School, will take place the week of July 11-15, 2016. Put it on your calendar now!

Epiphany to Lent Lessons

During Epiphany, we explore many of the stories of Jesus' teaching and healing, working to understand Jesus' ministry as *God with Us*. It's a great time to reread these stories with our children and share them together. Our children are guaranteed to amaze you with what they understand and what they help us understand.

Lenten Mite Box Offering

Yes, it's almost that time again! Our yearly Lenten Mite Box offering will begin February 14. Expect your children to bring home information on his/her class's choice of a goal on February 7th so they'll be ready to begin on Ash Wednesday. Each class member will be asked to bring in a weekly offering so we can continuously measure how close we are to our class goal. Classes will learn the project they have chosen helps others and offer prayers together for the recipients of our gifts. Expect a weekly update from your teacher. Please help us remember that weekly offering. The offering will conclude the Sunday after Easter.



As always, anyone is invited to participate!

Studying Interfaith Relationships

Our Lent program this year focuses on learning about our neighbors. It is building on your questions and conversations arising from learning more about the Abrahamic faiths of Judaism, Islam, and where they intersect with Christianity. We are planning a series of events to continue learning about our neighbors. The first event is the Community Outreach Sabbath, which Beth El Congregation is hosting:

Would you like to learn more about Judaism and Beth El Congregation?

Community Outreach Sabbath has become a tradition for Beth El Congregation and its neighbors in the Winchester area. Rabbi Scott Sperling will lead an informal discussion at 6:30 pm that will provide an orientation to the Sabbath service and to answer questions that you might have about any area of Jewish community life, belief and worship. The service will feature some of the best of contemporary Jewish music and the beautiful prayerbook of Reform Judaism. We look forward to welcoming you!

Friday, February 12

6:30 pm Discussion with Rabbi Scott Sperling

7:30 pm Sabbath Services

Beth El Congregation (520 Fairmont Ave. Winchester, VA 22602)

If you would like to attend, please call the Christ Church Office (540-662-5843) by February 10. Other events in this program will be announced in coming weeks.

Christian Formation

Adult Daytime Faith Study

Our Adult Daytime Faith Study in February and continuing through March will explore the Old Testament using the Great Courses DVD, “The Old Testament.” Because of the large number of lectures in this program, we will focus on the lectures pertaining to the book Genesis.

To help give some background on the lecturer, here are some sections from the course description: *Dr. Amy-Jill Levine of Vanderbilt University Divinity School and the College of Arts and Sciences thoughtfully explores selected passages from the texts called the Old Testament, the Hebrew Bible, and the Tanakh. She provides clear examples of how various approaches to biblical research and interpretation can enrich your understanding of this inexhaustibly fruitful and powerful text.*

Through these lectures, you will not only probe the content of the biblical books, but you will also explore debates over their meaning, the historical and cultural situations they reflect and address, and the critical methods by which they have been interpreted. The goal of an academic course in biblical studies, she maintains, is not to undermine religious faith, but to use the best available knowledge and research to give believers richer insight into the writings that form their spiritual bedrock.

The study is led by Webster and meets in the Parlors on the 2nd and 4th Thursdays of each month. Meetings in February are the 11th and 25th. Everyone is welcome to join us. If you have questions, please do not hesitate to call the Church Office (540-662-5843) or email Webster at rector@christchurchwinchester.org.

Adult Forum Expanded for February

Back by popular demand: “The Jesus Fatwah: Love Your (Muslim) Neighbor as Yourself”

Many parishioners were not able to join in the Adult Forums in January and requested another opportunity to watch the Fatwah program. So, we will hold the program again on Sundays, from February 7 until March 6, from 4:00 until 5:00 pm in the Parish Hall. The exact location will depend on the number of people who attend.

We will continue our discussion of this topic on Sunday mornings in February, during Adult Forum at 9:30 am, as well.

There are many questions, opinions, and misconceptions floating around in recent days about the Abrahamic faiths of Christianity, Judaism and Islam. Many of us have the desire to learn about and understand the basics of Judaism and Islam and their relationship to Christianity. As the series writers describe it:

Much of what passes as information about Islam is weed-like disinformation rooted in stereotype and watered by fear. In The Jesus Fatwah, Islamic and Christian scholars offer reliable information about what Muslims believe, how they live out their faith, and how we all can be about building relationships across the lines of faith.

Featuring seventeen Islamic and Christian scholars, including: Hans Küng (Islam: Past, Present and Future), Brian McLaren (Why Did Jesus, Moses, the Buddha, and Mohammed Cross the Road?), Eboo Patel (Acts of Faith: The Story of an American Muslim), Stephen Prothero (God is Not One: The Eight Rival Religions That Run the World--and Why Their Differences Matter), Feisal Abdul Rauf (What's Right with Islam Is What's Right with America).

Calendar and Upcoming Events

Church Services

Sunday

Holy Communion Rite I 8:00 am
Holy Communion Rite II 10:30 am

Wednesday

12:00 pm Pilgrim's Chapel
(Healing Service 3rd Wed)

Second Monday

6:30 pm Special Needs—Sanctuary

Weekdays

7:30 am Morning Prayer Pilgrim's Chapel

February

- 7 Vestry Meeting at Noon
- 9 Shrove Tuesday Pancake Supper
- 10 Ash Wednesday Services
- 12 Community Outreach Sabbath
- 13 Men's Fellowship at 7:30 am
- 14 Valentine's Day (Just a reminder!)
- 24 Salvation Army Dinner



Committee & Group Meetings

Adult Choir Rehearsal	Wed: 7:00 pm
Adult Forum	Sun: 9:30 am
Alleluia Singers	Sun: 8:45 am
Daytime Faith Study	2nd/4th Thurs: 10:00 am
Knit Unto Others	3rd Tues: 2:00 pm
Liturgical Bible Study	Wed: 10:30 am
Community Fellowship	2nd Thurs: 7:00 pm
Men's Fellowship	2nd Sat: 7:30 am
Outreach Committee	4th Tues: 7:00 pm
Properties Committee	3rd Tues: 7:00 pm
Treasure Box	Wed & Fri: 10 am-4 pm
Vestry	2nd Tues: 7:00 pm
Women's Bible Studies	Tues: 10:45 - Noon Thurs: 6:30 pm – 7:45
Youth Group	Sun: 6:00-7:30 pm

The Rector's day off is Friday.
The Assistant Rector's day off is Monday.

Children's Chapel

Join us on the 2nd floor of the Parish Hall from 10:30 am until the Peace. We welcome children ages 3-7. No registration is required. The service is child-sized and allows our young parishioners to explore the same Gospel we hear in the Sanctuary but with more opportunity to wiggle and talk! Our Children's Chapel leaders always welcome an extra pair of hands if you would like to join them!

Nursery

Our nursery, on the 2nd floor of the Parish Hall, is open from 10:15 am through the end of the 10:30 am service to serve infants and children up to age 3.

February Birthdays

- 1 Kay Teachout
- 2 Al McGilvray, Jr., Steve Haines
- 4 Ward Heffern
- 5 Scott Harper
- 6 Dee Johnston, Sean Raymond
- 7 Bobby Arthur, Bebe Tischler
- 8 Bill Endorf, Glen Opheim
- 10 Reed Constantino, Rick Constantino
- 11 Rebecca Gibson, Scott Gregory,
David Wingenbach
- 12 Tricia Glass, Ann McQuinn, John Lewis,
Sally Megeath, Bernie Swope
- 13 Joyce Byrd
- 14 Martha Griffin, Lucy Rockwood
- 15 Dino Morgoglione, Kathi Adams
- 16 Bruce Trant, Teresa Barton,
Ashley Bingaman
- 17 Sarah Browning, Detra Michaels,
Stephen Brown
- 19 Bruce Allen, Willie McGilvray
- 20 Elle Hamman
- 23 Richard DeBergh, Roger Zebarth,
Bill Jones
- 25 Beth Conrad
- 27 Tyler Barnes
- 28 Todd Barton

Wedding Anniversaries

- 2 Steve & Neile Grady Martin
- 3 Jim & Sylvia Petrie
- 4 John & Mary Margaret Applin
- 8 Martin & Nancy Tabaka
- 12 Dan & Mary Gloster
- 13 Dennis & Bobbie Bromley



**Save
the date!**

St. Patrick's Day Dinner

Saturday, March 12, 2016 at 6:30 pm

Proceeds support
the 2017 Youth Pilgrimage



**Look for Christ Episcopal Church
Winchester and like us to stay up-to-date
on the latest news!**

Please Note:

We will publish birthday and anniversary information only with explicit permission. Please contact the Church Office if you wish to be added to or deleted from these lists. Please keep the Church Office informed of any changes to your address, phone numbers and e-mail addresses. Please let the office know the school addresses of our college students.

From the Outreach Committee

Christ Church Thermal Ministries: Images from WATTS Host Weeks



CCAP Collection for February

CCAP (Congregational Community Action Project) is a ministry of 46 worshipping communities in Winchester and Frederick County that have come together to support our neighbors in need with financial, material, and other assistance. CCAP is located at the corner of Cork and Kent streets, behind the Shell station, and its hours of operation are Monday - Thursday 8:30 am - 2:30 pm and Fridays 8:30 am - 11:30 am. Donations are accepted during these hours, and are received on the right side of the building, towards the back. There are always friendly and helpful volunteers, many of whom are CCAP clients, who are happy to help unload any donations. For more information about CCAP, please visit www.ccapwinc.org.

In February, we will collect **regular-sized bottles of shampoo and conditioner** for CCAP. There is a bookshelf in the foyer of the Parish Hall marked CCAP. Please leave items there.

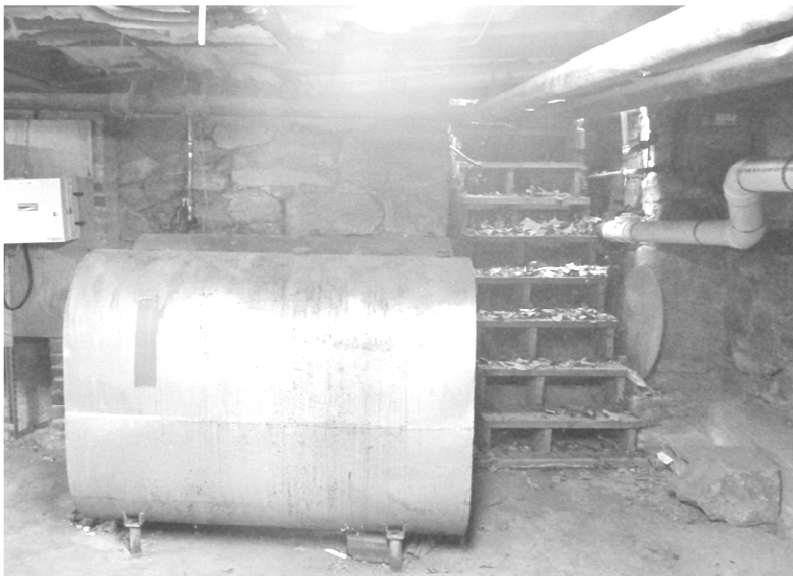


From the Properties Committee

Starting the List of Jobs

Over the past year, the Properties and Finance Committees have been working on a program for ongoing care and upkeep of Christ Church facilities. Having completed an extensive inspection of all of our buildings, the Properties Committee established a prioritization list of the necessary repairs with cost estimates of those projects. The prioritization of the projects is broken down into three groups – safety/security, the envelope or sealing of exterior/structure, and other projects. Many of the projects are less expansive repairs which, when done, will help to avoid significant costs if left unattended. Other repairs are more expensive and need to be done in the near future. Given that prioritization list, the Finance Committee agreed that the costs did not warrant the use of a capital campaign. Instead, the Finance Committee recommended to the Vestry to use existing funds which have been established through bequests and other large gifts over the years to address such projects. At the January 2016 Vestry meeting, the Vestry agreed with the recommendations of the Properties and Finance Committees to get this work started in 2016. The Treasurer would be happy to accept donations from the parish in support of these projects throughout the year.

One of the first projects to be addressed is reinforcing the existing floor joists of the Smith Building. During the facility inspections, the Properties Committee found that the existing floor joists need more than the basic repairs which had been done in the past to address termite and other types of deterioration. See pictures below for an idea of how things currently look in the Smith Building basement. Working with a structural engineer, the committee received approval to get bids to do the necessary work to ensure the structural safety and integrity of the building. The committee will keep in touch with the parish about this project as it moves ahead.



From the Finance Committee

2015 Budget & Actual

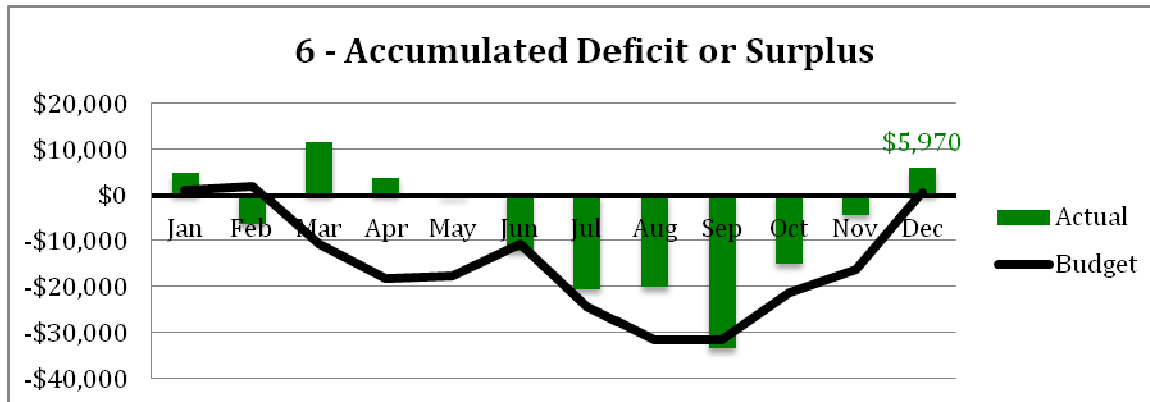
Below are the final numbers for 2015. Revenues were strong in December and in total for 2015 were about \$9400 above budget. In addition, expenses were below budget for the year (before considering Sabbatical & Properties reserves). The result was that we were able to fund the Sabbatical Reserve and the Properties Reserve for BOTH 2015 and 2016, and still contribute the remainder of \$5973 to the Operating Surplus account.

2015	Jan - Dec Actuals	Jan - Dec Budget	Jan - Dec Actual - Budget
Total Revenues	\$587,655.00	\$579,583.00	\$9,397.00
Expenses			
Total Personnel	\$397,641.26	\$400,072.00	(\$2,496.59)
Utilities	\$27,258.22	\$26,900.00	\$358.22
Property/Maintenance	\$41,265.68	\$40,400.00	\$865.68
Office Expenses	\$22,686.35	\$22,500.00	(\$5.61)
Christian Education Expenses	\$10,514.62	\$10,600.00	(\$22.21)
Music Expenses	\$7,068.31	\$7,500.00	(\$431.69)
Worship	\$843.32	\$1,100.00	(\$256.68)
Stewardship	\$1,175.40	\$1,000.00	\$200.40
Outreach	\$56,674.24	\$57,200.00	(\$525.76)
Pastoral Care	\$657.74	\$800.00	(\$142.26)
Parish Life	\$1,588.78	\$2,500.00	(\$911.22)
Communications	\$2,307.96	\$2,425.00	(\$117.04)
Sabbatical Reserve	\$2,000.00	\$1,000.00	\$1,000.00
Properties Reserve	\$10,000.00	\$5,000.00	\$5,000.00
Total Expenses	\$581,681.88	\$578,997.00	\$2,515.24
Net Total	\$5,973.12	\$586.00	\$6,881.76
To Operating Surplus	\$5,973.12		
Final Net Total	\$0.00		

From the Finance Committee

Budget Cash Flow for 2015

The graph below is one that is presented at every Vestry meeting. It clearly shows that budgeted expenses throughout the year EXCEED budgeted revenues (line part of graph). It is not until year-end that total budgeted revenues finally catch up to total expenses. This year-end graph shows that we had a very strong fourth quarter such that total revenues caught up with and exceeded expenses by year-end.



2016 Budget & Organ Renovation

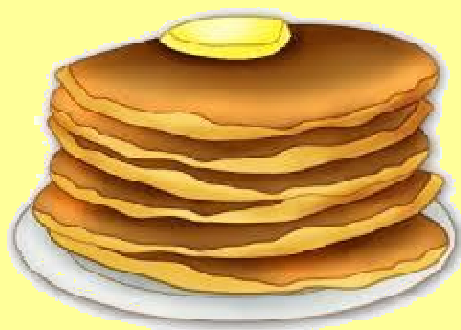
A 2016 balanced budget was prepared by the Finance Committee, submitted to and approved by the Vestry at their January 2016 meeting. This budget was presented at the Annual Meeting on January 31.

As mentioned in last month's Angelus, we had a great Organ Renovation Campaign in 2015. We have already begun paying back some of the amount we borrowed from our investment funds and will continue to do so as additional pledged funds are submitted.

Christ Church Shrove Tuesday Pancake Supper

Our Annual Shrove Tuesday Pancake Supper will be Tuesday, February 9, 2016, in the Tilford Room.

Everyone is invited for pancakes, bacon, sausage, and other treats served from 5:30 pm until 7:00 pm. This event is hosted by the Vestry and donations will be accepted at the door. All proceeds will support the next Youth Pilgrimage.



Fellowship Groups Meet

Our **Men's Fellowship** will meet at its usual time and place, February 13, at 7:30 am, in the Baden Center, where we will talk about goals and goal-setting and what it means to Christian men in today's society. Breakfast will be served. And remember Valentine's day!



There is no **Community Fellowship** meeting planned in February.



The Treasure Box is open
Wednesdays and Fridays from
10 am—4 pm.
114 W. Boscawen Street

The Treasure Box is celebrating! Our revenues for 2015 exceed the previous year by about \$3000 enabling us to increase our gifts to the community. Amounts to support food cards, the Panda Pantry, the Salvation Army CEC food ministry, ADAPT Adult Care, and the Evans Home increased by \$500 each. We feel this is a direct result of our Saturday openings and increased donations. We are especially in need of good quality, gently-used household items of all kinds—linens, art work, kitchenware, small appliances, and dishes. So please think TREASURE BOX as you de-clutter and reorganize for the new year. Thank you to all our donors who helped us fulfill our mission to serve the neediest in our community in 2015.

Parish News

2016 Parish Weekend at Shrine Mont

Parish Weekend at Shrine Mont will be May 6-8, 2016—Mother's Day weekend. Have an excuse not to go this year? Think twice!

Same weekend as Apple Blossom? No, Apple Blossom is the weekend before. Tired after Apple Blossom? It's the perfect way to re-charge!

Spend Mother's Day weekend away? Yes, get Mom away from the chores at home and let someone else cook.

Too many activities to do there? Not really. Your presence is only requested for three meals and the Rector may give you a pass on any of these if you'd prefer.

It's only for families? Nope. There are activities for everyone. You can join in with the families there or enjoy some solitude.

Feel like you won't know everyone? All the more reason to go! You will certainly know them when you return!

No, the swimming pool won't be open and there's no cell service, but there's hiking, fishing, games, porch rocking, napping, even golf nearby. Plus, there's BBQ, meatloaf, roast beef, fried chicken, pancakes...

If you'd like to learn more about the weekend, please talk with Martha & Wilborn Roberson, Kirk & Linda Gibson, Alice Lees, Barry & Diane Schnoor, Robb and Cathie Russell, or Webster and Bridget. Or, call the Church Office at 540-662-5843. To learn more about Shrine Mont, visit www.shrinemont.com.



THE ANGELUS

Christ Episcopal Church
114 West Boscawen St.
Winchester, VA 22601-4116

Non-Profit
Organization
U.S. Postage Paid
Winchester, VA
Permit No. 216

The Angelus is a monthly publication of Christ Episcopal Church.
For weekly updates, please see *The Sunday Announcements* in the bulletin.

Parish Nurse Musings

Many of us are familiar with Helicopter Parents. I often observe “helicoptering” by many more of us than just parents. An article I read recently said that parents should let their children talk to the doctor without interrupting them. I remember when I was director of the Wellness Center at Shenandoah University, I had to remind parents that it was time for their freshman student to talk about his or her health without interruption. And health-related discussions are just one example. Let people around you make their own decisions if it won’t hurt them. As people age and move to smaller homes, ask them what they want to give away or sell. How do they want the furniture arranged? Empower all people if possible. Usually children can make good decisions about what to wear if given the chance. Let those you’re with verbalize what they want to say on their own. You can add to what they say if it isn’t complete. Compliment people when they make good decisions. Don’t condemn if they aren’t wonderful decisions. If they can learn, maybe suggest a different approach. We all want to be independent and not have someone hovering over us like a helicopter. See you next month!



Your Parish Nurse, Helen