

# THE ANGELUS

Volume 67 Number 3

Christ Episcopal Church • Winchester, Virginia

November 2016

## Rector's Message

Dear People of Christ Church,

This November is going to be a month of transition and conversation, as we watch both what happens politically in our country and how people treat one another as it happens. I have heard from many about how relieved they will be when the election is over. It seems we are all keenly aware right now of the high level of anger, resentment, prejudice, and other negative feelings that many people hold in themselves for all kinds of reasons.

My concern is how tempting and easy it is for us to participate in the anger and resentment since that often requires less risk and effort than taking time to talk, meet, and greet people we may not know, or may not want to know. This is not a new realization though. As the poet Jonathan Swift remarked about religion in the 18<sup>th</sup> century, and speaks to us today, "We have just enough religion to make us hate, but not enough to make us love one another." There are plenty of examples of people using religion to condemn others to justify their own anger and rage. The challenge and the opportunity become how to change that.

November in the United States always ends with Thanksgiving. This is so appropriate this year, especially, to counter to how so many people may be feeling at the beginning of November. If there were ever a time to be reminded about the need to give thanks to God for the blessings and the challenges in our lives, this is it. And, yes, I said challenges. Challenges help us to remember that we always need to rely on God – not just when life is good, but also when we encounter difficulties.

This Thanksgiving also offers you, the members of Christ Church, the opportunity to share thanks and participate in the act of giving, as we join with First Presbyterian and other churches and organizations to provide Thanksgiving meals for the community. There are opportunities to donate food and money, to cook ahead of time, and to volunteer before, during, and after the dinner. See p. 2 and the bulletin in coming weeks for more information. There are also traditional opportunities to provide food to other local food banks and organizations for the holiday. For example, see p. 15 for our CCAP collection information.

As you consider this, I want to encourage you to go an additional step. Habits are not established by doing something one time. You need to do it again and again. Do not stop at giving food or donations to an organization once a year. Do it repeatedly throughout the year. The need is always there. And that one-time act of giving becomes a habit of giving.

Some of you may know that one of my stretch areas of growth during my sabbatical was to take on something new and different for me, which was the practice of yoga. One of the instructors always ends her class with a wonderful Buddhist philosophy by reminding us, "Greet the world with an open smile." There are days when I find this reminder annoying and there are days that I find this encouraging. Ironically, it is on the days that I

*Continued, p. 2*



NOVEMBER 2016

## Contents

1	Rector's Message	9	Birthdays & Anniversaries
2	Rector's Message	10	Stewardship
3	Asst. Rector's Message	11	Stewardship
4	Christian Formation/Vestry	12	Finance
5	Christian Formation	13	Finance and Properties
6	Worship	14	Parish News
7	Outreach	15	Parish News
8	Calendars	16	Nurse's Musings

## Rector's Message

find this reminder annoying that I also know that I need it the most. The smile is a way to indicate greeting and welcome to people we see. It also challenges us to be aware of how we feel inside. If it is a day when we are anxious, angry, when we notice that, we can also be aware of our probable need to pray to God for God's presence which may also remind of the good news of God's love for us, which in turn may bring about a smile. While we will not find the phrase "I can smile, with God's help" in the service of Holy Baptism in the prayer book, it may not be a bad mantra for us to consider on difficult days.

I know that the world at large has a huge challenge to change some bad habits. It will take a long time and a lot of effort to change that. I also know that it is easier to follow along with the current rather than swim against it. However, you and I have to start somewhere, and our discipleship of Jesus puts us in that group that is swimming against the current. What made Jesus stand out so much in his life and ministry was his call to go counter to the interests of human selfishness and become more as God's kingdom wants us to be. In God's kingdom, on earth as in heaven, we are to be people known for invitation, grace, compassion, and known to rely on the transforming love of God.

As we move into Thanksgiving, may we not only be a people who give thanks, but also a people who continue to exercise giving. It does not matter if the giving is in thought, word or deed. The encounter of thanksgiving with others may seem overly simplistic, but it is not a bad habit to start, with God's help.

Faithfully,



The Very Rev. Webster Gibson, Rector  
[rector@christchurchwinchester.org](mailto:rector@christchurchwinchester.org)



Christ Church will participate in the **Community Thanksgiving Dinner** hosted by First Presbyterian Church in Winchester. The annual dinner is on Thanksgiving Day, Thursday, November 24, from 11:30 am—2:00 pm in the Fellowship Hall of First Presbyterian. Each Thanksgiving many volunteers from First Presbyterian, as well as other community churches and businesses, gather to give back. Giving back brings us great joy.

Christ Church has been tasked with providing 20 cooked turkeys for the dinner and cooked pies (apple, pecan, or pumpkin). We will coordinate donations of food from Christ Church in the coming weeks.

Volunteers are also needed for all types of jobs, including delivery drivers, turkey bakers, turkey carvers and many more. You can sign up directly online at [fpcwinc.org/community](http://fpcwinc.org/community). Again, please do not sign up for food donations online. We will do that here at Christ Church.

Monetary donations are appreciated as well. Please make checks payable to First Presbyterian Church with Community Thanksgiving Dinner in the memo line. We will forward any such checks collected at Christ Church to First Presbyterian or you may mail to them at First Presbyterian Church, 116 S. Loudoun St., Winchester, VA 22601.

If you would like more information or have a question please call the clergy at 540-662-5843 or Chris Ferguson at 540-662-4219. We encourage you to be part of giving back to our community and experiencing the joy that comes with it.

## From the Assistant Rector

Dear Friends in Christ,

In the midst of so much troubling news bombarding us day in and day out, it is often difficult to stay focused on the good, on God's unfathomable love and grace in our lives. We watch the news and see as fighting continues in many regions of the world, as people cry out for justice and a deeper understanding of how our lives are interconnected with one another and with God's created world, as politicians sling mud in hopes of garnering more votes, and it becomes increasingly harder for us to focus on the good, on the goodness of people, and our call to be a light in this world spreading the hope of the Gospel. And, I think part of our struggle to stay centered on our call to be different, to be people of light and love, even in the middle of the ups and downs of this earthly life, is that not only are we inundated with images of pain and suffering, of people hurting one another, but also with messages that try to portray some version of a "perfect" life—a life in which nothing ever goes wrong, we get our first choice college, we meet the perfect person, we have the best of everything, we're physically fit, and life is super happy. I think we begin to feel that if the world is in such chaos and our personal lives are not all sunshine and rainbows, then there is something wrong with us. I don't know about you all, but I sometimes find myself swimming in a sea of feeling inadequate, of self-doubt, of fear, a sense of not being whole. There are days that it is just not easy to recognize myself as a beloved child of God. And those are the days that I need to hear these words and repeat them to myself:

“We bless you for our creation, preservation, and all the blessings of this life; but above all for **your immeasurable love** in the redemption of the world by our Lord Jesus Christ; for the means of grace, and for the hope of glory.” *The General Thanksgiving*, BCP, p. 101

God's immeasurable love for us is what gets me through those moments of fear or when I'm feeling utterly incapable of doing all that builds up on my to-do list. God's immeasurable love says that we are more than enough, that we are blessed, and that we are beloved. In turn, we are called to be people who love immeasurably, almost recklessly, as we proclaim the Good News of Jesus Christ. We express this love in how we engage one another in relationship, because after all we are a beloved community, working together to show God's love through the life and ministry we share.

In this season as we celebrate the mission and ministry of Christ Church and consider how we, as a beloved community, are called to be a light in this world, I find myself thankful for the many ways in which you all remind me of God's immeasurable love and the ways in which God has blessed us richly with one another and this church, people and a church through which we encounter the living God.

Blessings,



The Rev. Bridget Coffey, Assistant Rector  
bcoffey@christchurchwinchester.org

## Christian Formation

### Sunday School News

#### **Celebrating All Saints' Day—Sunday, November 6**

All Saints' Day is always a special celebration in the Sunday School for grades 5 and younger. It's time to meet some of the famous saints throughout the ages! For younger classes, we will have a morning of looking at how, with God's help, some of the figures in our spiritual history rose above all sorts of difficulties. We will be moving through learning stations around the Commons for our experience and finish in the Children's Chapel around 10:00 am so the Cherub Choir can stay to practice when the other classes return to their classrooms to talk over what they have done.

#### **Preparing for Advent**

Signups/casting for the annual Christmas Pageant at the 4:30 pm service on Christmas Eve will begin Sunday, November 13. Check the bulletin board in the Commons or contact the Church Office (540-662-5843). There's an opportunity for everyone who wants to participate – animals to angels, speaking and non-speaking parts, visiting grandchildren, friends, etc. Rehearsals will take place in December. As always, volunteer help is welcome!

Classes and Children's Chapel will all observe a regular schedule Thanksgiving weekend. Remember, the Sunday after Thanksgiving, November 27, is the first Sunday of Advent.



## From the Vestry

### Highlights from the October Vestry Meeting

- The Treasurer reported that we are better than budget in the expected areas and that budgeting will start soon for next year. Margaret Arthur turned in a detailed audit to the Finance Committee. A motion to accept the audit and send to the diocese was approved. The Treasurer is working on a brochure about non-operational gifts to share with the congregation.
- The Outreach Committee requested to move \$250 from the general operating account to the Angel Tree fund, to set aside \$2,000 for the 2017 Stop Hunger Now food packaging (to increase the number of meals prepared), and to gift \$1,000 to the Evans Home. All were approved unanimously by the Vestry.
- The Senior Warden shared a thank you from Bishop Gulick for our donation to his discretionary fund.
- The Diocese of Virginia has launched a new website.
- Church Office volunteers are now working one shift daily from 10:00 am to 2:00 pm and phone training continues.

## Christian Formation

### Adult Daytime Faith Study

We are exploring the Old Testament using the Great Courses DVD, "The Old Testament." The most recent lectures in this program are about the books Judges through Kings. The study meets in the Commons (all the way upstairs in the Parish Hall) at 10:00 am on the 2nd and 4th Thursdays of each month. **In November, we will only meet on November 10.** All are welcome to join us! Questions, please call the Church Office (540-662-5843) or email Webster at [rector@christchurchwinchester.org](mailto:rector@christchurchwinchester.org).

### Adult Forum in November

Adult Forum meets on Sunday mornings through the program year in the Tilford Room at 9:30 am.

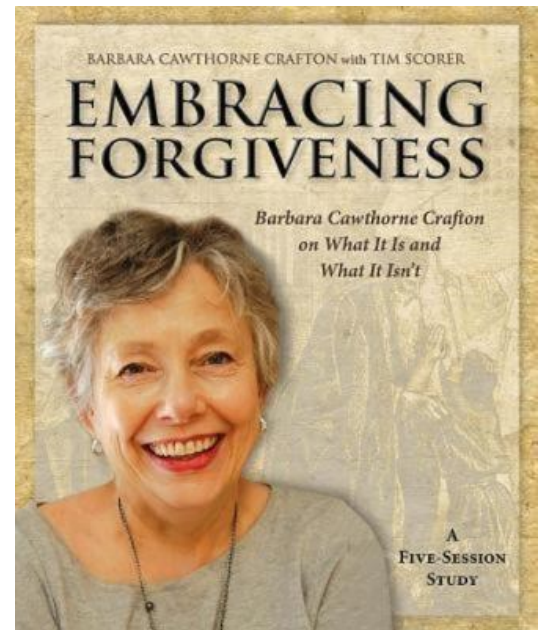
Our forum will continue with the DVD series, "Embracing Forgiveness: What It Is and What It Isn't," by Barbara Cawthorne Crafton. This is part of *The Embracing Series*, which we have used on such topics as the prophets and in conversations about adult faith.

One of the descriptions of the program is, "*With wisdom, wit, and theological depth Barbara Cawthorne Crafton explores the perennial topic of forgiveness from the perspective of gift rather than duty. Along the way, she exposes patterns of resistance and popular understandings that undermine our ability to receive and share the gift with others...*"

—Frank T. Griswold, 25th Presiding Bishop of the Episcopal Church

Barbara Crafton is also the speaker at the Diocese of Virginia's 2016 Fall Camp, so some of you will have also had the opportunity to meet her.

Please be sure to grab a cup of coffee and join us at 9:30 am in the Tilford Room of the Parish Hall.



## **Worship**

### **A Liturgical Moment**

To applaud or not to applaud, that is the question. And when it comes to the wonderful offering of a song of praise and glory to God by our beloved Cherub Choir, that question is a good one. Since the children are giving a performance, it would seem obvious to applaud so they can see our appreciation and affirmation for their singing. On the other hand, while the performance is given in church, this musical offering is not for US; it is for God. Just like any other choir's anthem, any gift of time, talent and treasure, it is given to the glory of God. And if we remember that our Lord Jesus fussed at his disciples when they tried to prevent the children from coming to Jesus, then we are reassured that our Lord is well pleased.

People ask me, "So what do we do with the children because we do not want to hurt their feelings?" I remind them that **after** the service in the hallways and at Coffee Hour, we applaud, we say thank you and well done, just like we do for all who serve in the services. People ask me, "But what if we simply applaud in the silence between the songs?" Even then, we need to wait. While it is tempting to applaud, Marsha Baden, our Cherub Choir director, is not waiting for applause. She is very busy. She needs some time between the songs to re-focus the children, remind them of the next song, whisper the tune to them, and then get them going. It always takes her time to do that, but she and the children need that transition time for their next offering in the worship.

People ask me, "But the children are so young, how can they possibly understand this?" I remind them that we teach them. We love, applaud, affirm, thank and congratulate the children before and after the service. We also teach them the importance and wonder of the offering the children are giving to God, offered by them and representing a gift from all of us. If they ask us why, we simply remind them that Jesus always loves the children. Jesus always loves a gift from the children.

I understand that sometimes people will be so moved that they will applaud. It is a natural response to a wonderful performance. Others will still not agree or know about this theology of gift in our worship. However, I once asked the question, "As the children grow up, at what age do you stop clapping in the service?" Another question is, "When do we start teaching and reminding the children of the importance and value of their offering to God, even if they are so nervous that they simply stand there?" That is a lifetime, and it is always done as a sacrifice, an offering in the knowledge of our Lord's joy, approval and appreciation. Thanks be to God!

And of course, thank you to the Cherub Choir and to Marsha Baden, their director. ~ Webster

### **Meeting Called for LEMs and Intercessors**

One of the fun things about life is that it is constantly evolving and changing. And yes, that means that our duties as Lay Eucharistic Ministers and Intercessors also change. So, Webster would like for all of us to get together in the Tilford Room on the evening of Sunday, November 20, from 5:00-6:00 pm. We'll enjoy some refreshments, celebrate your ministry to the church, and discuss some of the minor changes that have occurred. Then, we will all march over to the church to do a little practice.

Be sure to put this in your calendar. See you there!



# Outreach

## Angel Tree 2016

The Outreach Committee again invites the entire congregation to join in the ministry of the Angel Tree. We can follow Jesus' example of ministry to the poor and needy by helping children in our community who have little or nothing at Christmas time.

The Salvation Army's Angel Tree Ministry helps families in need by providing gifts at Christmas. Through an interview process, which took place in October, the Salvation Army qualifies children who reside in Winchester, Frederick or Clarke Counties to receive holiday assistance through the organization's distribution program. There will be more than 600 children in our community in the program this year. Many of the children who qualify for this assistance have a parent or parents who work and can just feed and clothe them, but not provide anything extra for the holidays. To support this community need, individuals and families at Christ Church will have the opportunity to select the name of a child or children, on an Angel Card, "to adopt." We will collect gifts at Christ Church and transport them to the Salvation Army for distribution.

You are invited to choose an Angel Card in the Tilford Room on Sunday, November 13, and Sunday, November 20, following both services. The cards have a child's first name, age, and some suggested gifts. Members of the Outreach Committee and volunteers will be available to help with your selection, offer suggestions, and answer questions. It is suggested that each child receive some new warm clothing and at least one toy – board games, books, riding toys, doll babies, purses for little girls, trucks, etc. Please do not be offended or think poorly of the children if their toy requests are "pricey items." Remember the effect of television advertising and how it targets certain high-ticket items throughout the holiday season, and what children hear from each other. The suggestions are just that – guidelines – and each Christ Church participant can decide what they purchase.

The final collection day of the gifts is Sunday, December 4, with gifts being checked in at the Tilford Room in plastic bags. The number of the "angel" should be prominently displayed inside or on the bag which you return to the Tilford Room. Please do not wrap the gifts, but you may include rolls of wrapping paper to help the Salvation Army.

We can also accept donations by check in the collection plate on any Sunday. It is important that you place the note "Angel Tree" in the memo line.

Additional volunteers are needed after each service on November 13 and 20 to assist the Outreach Committee. We are asking for ten volunteers on December 11 with cars, large vehicles, or pickup trucks to transport the gifts and bicycles to the Salvation Army collection point. A big "thank you" to all of the volunteers who helped so generously last year. Join us again, please.

Please contact Jim and Ann Taylor at their cell phone numbers (Jim—703-403-5264 or Ann—703-622-7059) to offer your time to assist with this generous ministry. If you have any questions, please call!



## Calendar and Upcoming Events

### Church Services

#### Sunday

Holy Communion Rite I 8:00 am  
Holy Communion Rite II 10:30 am

#### Wednesday

12:00 pm Pilgrim's Chapel  
(Healing Service 3rd Wed)

#### Second Monday

6:30 pm Special Needs—Sanctuary

### November

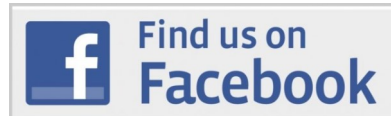
- 3     Oktoberfest Stewardship Dinner at 5:30 pm
- 8     Election Day—Voting in the Tilford Room
- 12    Men's Fellowship Meets, Keep Day
- 14    Special Needs Service
- 20    Meeting for LEMs/Intercessors at 5:00 pm
- 24    Thanksgiving Day Service 10:00 am
- 27    Advent Begins

### Committee & Group Meetings

Adult Choir Rehearsal	Wed: 7:00 pm
Adult Forum	Sun: 9:30 am
Alleluia Singers	Sun: 8:45 am
Daytime Faith Study	2nd/4th Thurs: 10:00 am
Knit Unto Others	3rd Tues: 2:00 pm
Lectionary Bible Study	Wed: 10:30 am
Men's Fellowship	2nd Sat: 7:30 am
Outreach Committee	4th Tues: 7:00 pm
Properties Committee	3rd Tues: 7:00 pm
Treasure Box	Wed & Fri: 10 am-4 pm
Vestry	2nd Tues: 7:00 pm
Women's Bible Studies	Tues: 10:45 - Noon Thurs: 6:30 pm – 7:45 pm
Youth Group	2nd/4th Sun: 6:00-7:30 pm

#### *Children's Chapel*

Join us on the 2nd floor of the Parish Hall from 10:30 am until the Peace. We welcome children ages 3-7. No registration is required. The service is child-sized and allows our young parishioners to explore the same Gospel we hear in the Sanctuary but with more opportunity to wiggle and talk! Our Children's Chapel leaders always welcome an extra pair of hands if you would like to join them!



**Look for Christ Episcopal Church  
Winchester and like us to stay up-to-date  
on the latest news!**

**The Rector's day off is Friday.  
The Assistant Rector's day off is Monday.  
Church Office Tel. 540-662-5843**



## November Birthdays

- 2 Jody Armstrong-Jones, John Pearson, Bridget Coffey
- 5 Stephanie McWhorter, Kenneth Vicchio
- 6 Charlie Gaynor, Benjamin Cluss
- 9 Mariel Becker-Welts
- 10 Delores Wheatley, Bill Jarvis, Scott Arthur, Brantley Lawson
- 12 Charles Lovelady
- 13 Nicole Francis, Will Armstrong, Jeffrey Dodd
- 14 Bill Old, Kim Pifer, Marrea Riggs
- 15 Alex Giller
- 16 Jason Conrad, Ann Taylor
- 17 Farley Massey
- 18 Steve Martin, Koy Mislowsky, Wendy Breslin
- 19 Steven "Tuffy" Whitacre
- 20 Diane Pacelli, Rosa Gibson
- 21 Joy Nesselrodt
- 22 Alex Waldie, Graham Giller
- 23 Arlene Hill, Christopher Ferguson
- 24 Emilie Pifer
- 25 Dorothy Gibson
- 26 Sally O'Neil
- 27 Dennis Shows
- 28 Shannon Dodd
- 29 Jay Russell, Marilyn Sanin
- 30 Ned Howard

## Wedding Anniversaries

- 3 David & Linda Meade
- 10 Christopher & Adelaide Turnbull
- 28 Nick & Kathy Nerangis
- 28 Frank & Sandra Armstrong
- 30 Robb & Cathie Russell

celebrate!



## Congratulations!

Ben Sheppard & Caroline Williams  
were married in Winchester  
on October 15, 2016.



### Please Note:

We will publish birthday and anniversary information only with explicit permission. Please contact the Church Office if you wish to be added to or deleted from these lists. Please keep the Church Office informed of any changes to your address, phone numbers and e-mail addresses. Please let the office know the school addresses of our college students.

## Stewardship



We are grateful for the ways that you already “walk in love.” You are faithful in your presence, witness, and generosity help to sustain our ministries and our life together. Thank you. “Walk in love” is a call to us to keep taking steps to imitate Jesus in a way that focuses on the actions of God among us and the actions and movements of God within us. It is a call to respond proportionally, step for step.

We have heard stories in church from people who share the pews with you at Christ Church and who walk deeply in many ministries here. We encourage you to listen and prayerfully consider the impact the ministries at Christ Church offer to each of us and to our community. And then, discern your responsibility to use the gifts God gives you to do the work God calls you to do. Come to Christ Church for worship, sit in your favorite pew, and be led by God to connect in the many ways we are fed through Jesus Christ to go out and “walk in love” with our Lord!



*“We give our monies to Christ Church because how can one not give to uphold Jesus Christ who is the church’s ‘firm foundation?’ Jesus, God’s only son, gave his life for all. Belief in Him and trusting in Him every day guides us on our journey on earth. Who else but Jesus can take away anger, ugly thoughts, disbelief, etc. and replace in our minds with good thoughts and hope? It is through giving that we seek to uphold our church (i.e. our faith community) as we gather each Sunday to replenish our beings through worship.”*

*Chris and Melissa Ferguson*



*“Since joining, I have been active in many church activities giving of my time and talent, and making regular pledges to the church. To prepare for this season of annual giving—Walk in Love—I took an approach much different from what I had done in the past to decide what my annual pledge should be. I visited the diocesan website, read about Walk in Love and viewed Bishop Johnston’s video several times. I liked what I read, and could relate to what the Bishop said. So, I took some time to reflect on all my blessings, considering the many ways that Christ Church and this congregation impact not only my life, but also our community. I have a heart full of love and gratitude for this church and each of you. I want to give to support the mission and ministries of our church—and continue to give of myself, my time, talent and treasure, because it makes me feel good.”*

*Karey Starnes*

## Stewardship

Proportional giving is offering to God, in a committed and faithful manner, a portion of what God has given us. The Biblical guideline for tithing is ten percent of one's income, given in gratitude for God's blessings and to further God's work in the world. Giving a percentage of our income—increasing each year toward or beyond the tithe—is a process that helps deepen our awareness of the abundance of God's love. Here is a chart which shows proportional giving from 2% to 15% monthly. If you would like to use an online calculator to evaluate proportional giving options for your family, please visit: <http://www.nacba.net/documents/tithe.htm>



annual income	Monthly Giving Guide				tithe		
	2%	4%	6%	8%	10%	12%	15%
\$ 20,000	\$ 33	\$ 67	\$ 100	\$ 133	\$ 167	\$ 200	\$ 250
\$ 40,000	\$ 67	\$ 133	\$ 200	\$ 267	\$ 333	\$ 400	\$ 500
\$ 60,000	\$ 100	\$ 200	\$ 300	\$ 400	\$ 500	\$ 600	\$ 750
\$ 80,000	\$ 133	\$ 267	\$ 400	\$ 533	\$ 667	\$ 800	\$1,000
\$ 100,000	\$ 167	\$ 333	\$ 500	\$ 667	\$ 833	\$1,000	\$1,250
\$ 150,000	\$ 250	\$ 500	\$ 750	\$1,000	\$1,250	\$1,500	\$1,875
\$ 200,000	\$ 333	\$ 667	\$ 1,000	\$1,333	\$1,667	\$2,000	\$2,500
\$ 250,000	\$ 417	\$ 833	\$ 1,250	\$1,667	\$2,083	\$2,500	\$3,125
\$ 300,000	\$ 500	\$ 1,000	\$ 1,500	\$2,000	\$2,500	\$3,000	\$3,750

### Christ Church 4th Annual



**Thursday, November 3 at 5:30 pm  
in the Tilford Room**

The Stewardship Committee is hosting the always enjoyable Oktoberfest Fellowship dinner. All are welcome for a night of German food and fun.

This is a BYOB event—feel free to bring your favorite German beer or wine! The menu will include: brats, pork loin, applesauce, sauerkraut, potatoes, and dessert. Coffee, tea and soft drinks will be provided.

Please call the Church Office (540-662-5843) if you plan to attend. Join the fun!



## From the Committees

### Finance Committee



**2016 is coming to a close.  
We need to finish strong  
and meet the BUDGET CHALLENGE!**

#### What is the 2016 Budget Challenge?

On top of pledged, unpledged, and other revenues (plate offerings, holiday offerings, building use income, etc.), *we need to raise \$7,200 to have the operations budget for 2016 break even!*

At the annual meeting in January, the 2016 operating budget was presented and the **BUDGET CHALLENGE** was explained. In short, budgeted expenses for 2016 will exceed normal budgeted revenues by \$7,200 at year end! In order to balance the budget for 2016, it was decided to “challenge” the congregation to generate an additional \$7,200 above normal pledged, unpledged, and other revenues.

**Expenses:** When developing the 2016 budget, the Finance Committee reviewed all expenses and agreed that Diocese-recommended salary increases be budgeted for our clergy and staff. Medical and insurance costs were also increased per carrier 2016 quotations. Utilities, Properties and all other Program (Christian Education, Music, Worship, Outreach, etc.) costs were virtually unchanged from 2015 levels. The resulting expected total 2016 expenses amounted to \$580,100.

**Revenues:** After reviewing all revenues (pledged, unpledged, and other revenues) the resulting expected total 2016 revenues amounted to \$572,900. There was a noticeable drop in expected 2016 pledged revenue from actual 2015 pledged revenue due to some attrition (deaths, relocation, and other reasons). Rather than cut programs or not grant salary adjustments to our staff, it was proposed to identify a **BUDGET CHALLENGE** line item of \$7,200 to balance the budget for 2016.

**Big Picture:** The \$7,200 Budget Challenge amount is only about 1.33% of the total of pledged and unpledged amount for 2016.

#### How can we meet the 2016 Budget Challenge?

There are so many ways to help!

- Make an extra payment. (If you donate weekly, just one extra week is almost a 2% increase.)
- Since the Capital Campaign is over, consider a special gift to help meet the Budget Challenge.
- Have extra money at year-end? Donate to help meet the Budget Challenge.
- Any and all extra gifts will help us meet our goal to break even in 2016.



## From the Committees

### Finance Committee, Continued

#### 2016 Budget Performance - Actual versus Budget:

We are still on track, but the table below shows the real impact of steady monthly expenses following low revenues during the summer months. Expenses exceed revenues by about \$48,800 (slightly better than budget at \$51,290).

Through Sep 30	Actual	Budget	Difference
Total Revenues	\$ 384,415	\$ 382,355	\$ 2,060
Total Expenses	\$ 433,214	\$ 433,645	\$ (431)
Difference	\$ (48,799)	\$ (51,290)	\$ 2,491

Like in past years, the 2016 budget expects a strong final quarter with a peak at year end. Quarterly statements were mailed out in October, so if you are behind on your pledge, please try to catch up.

#### Are we up to the challenge?

This congregation has responded favorably to both a Capital Campaign and to the recent Organ Renovation Campaign. With your help, we will finish strong in 2016!

### Properties Committee

Update on current projects:

- Check out the before and after photos below from the Lord Fairfax Room (the church basement). The wall was re-mortared and painted, drying the whole space out. Work continues now on the exterior of the wall.
- Work is soon to begin in the basement of the Smith Building and will include resolving some structural issues from deterioration of the support beams and removing a lot of old “junk.”
- Fall Keep Day will be on Saturday, November 12, 2016.





## Parish News

### Christ Church Annual Rummage Sale



Thank you to all who helped with the 2016 Rummage Sale. It was another great success this October, raising over \$16,000 to support parish programs. The year-round work of **Chris and Melissa Ferguson** make this event a success each year and we are so thankful for them and their efforts.

### Autumn Keep Day

Keep Day is our parish clean-up day as we tidy up before winter. On Saturday, November 12, we will work from 9:00 am until Noon on all sorts of projects—cleaning up from some of our interior projects, window washing, raking, sweeping, and more. Please bring your rakes and brooms and lend a hand to get the church and grounds ready for winter.

### 5th Annual Christmas Day Brunch

Celebrate on Christmas morning with your parish family!  
Join us for a potluck brunch following the 10:30 am service.  
Please bring a favorite brunch dish (eggs, fruit, pastries, veggies, etc.)  
- homemade or store-bought. See you there!



### Christmas Poinsettias

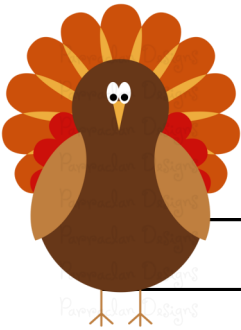
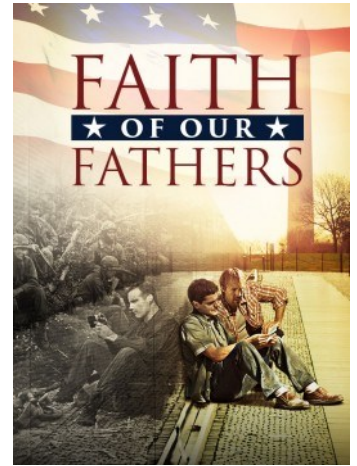
If you would like to order a poinsettia to adorn the altar for Christmas, please place \$11.50 in a flower envelope at the back of the church, beginning on Sunday, November 20. The last day to order is Sunday, December 11. On Christmas Day, you may take your poinsettia home with you. Many thanks from the Altar Guild!



## Parish News

### Men's Fellowship Meets

The Men's Fellowship will meet on Saturday, November 12, at 7:30 am, in the Tilford Room, where we enjoy the movie, *Faith of our Fathers*...a movie that brings together the lives of two sons whose fathers were killed in action in Vietnam. It is a faith-filled story of the struggles of two sons living their lives without their fathers. All men of the parish are welcome and breakfast will be served.



### CCAP Thanksgiving Collection for November

In November, we will collect food items for Thanksgiving dinners for CCAP to distribute to clients. Our collection will end on **Sunday, November 13**, as we need to deliver the donations to CCAP that week for them to distribute. Please donate: mashed or other boxed potatoes, gravy in jar or can, cranberry sauce, canned corn, peas, green beans, cake, pie, or cookie mixes, and throw-away roasting pans. All food should be non-perishable.

CCAP (Congregational Community Action Project) is a ministry of 46 worshipping communities in Winchester and Frederick County that have come together to support our neighbors in need with financial, material, and other assistance. There is a bookshelf in the foyer of the Parish Hall marked CCAP. Please leave items there and thank you for your generosity!

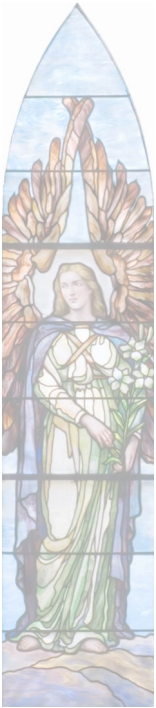


Fall sales at the Treasure Box have been steady, but we are still in need of some specific merchandise: men's shirts, preteen girls' clothes, stylish women's jackets, and household goods. Parishioners also may appreciate knowing that our "treasures" are sometimes put to good use by other charitable community partners for their fundraisers. In one instance, a lady from the Presbyterian church purchased all our lace doilies to turn into angel wings for their Christmas bazaar ornaments. This fall, a collection of discarded watches has been passed along to the Newcomer's Club. They are contributing a Christmas tree project for the Youth Development Center's annual tree fundraiser. Their theme this year is "Father Time" and they had put out the word for watches! The YDC tree fundraiser raises thousands of dollars toward their recreational and support programs for at-risk young people. This is a reminder never to underestimate the classic "trash to treasure" slogan as you comb through your attics, closets, and shelves!

The Treasure Box is open Wednesdays and Fridays from 10 am—4 pm at 114 W. Boscawen St.

**THE ANGELUS**  
Christ Episcopal Church  
114 West Boscawen St.  
Winchester, VA 22601-4116

Non-Profit  
Organization  
U.S. Postage Paid  
Winchester, VA  
Permit No. 216



*The Angelus* is a monthly publication of Christ Episcopal Church.

## Parish Nurse Musings

With winter weather around the corner, I am certain you all have made lists of things you need in case of a bad storm, but have you thought about your pets? Here is a disaster-preparedness kit for them:

- Have food and water for at least five days for each pet, with a manual can opener in case of power outage.
- Put medications in a safe container.
- Have a litter box, scoop, and garbage bags for pets' waste.
- Keep sturdy leashes, harnesses, and carriers to transport pets safely. Be certain the carrier is large enough so your pet can stay in it for hours, if necessary.
- Pets should be wearing a collar and identification tag.
- Current pictures of your pet with you should you need to identify them. The reason to include you in the picture is that we have a lot of theft of animals during storms.
- It's good to line up someone to take care of your pet should you need help and/or someone who would be willing to keep your pet in case you cannot go home. Most shelters for people don't accept pets.

Our pets are like family so prepare for them as you would your family! After a storm, our animal shelters often have taken in abandoned pets, so you might want to think of taking a new pet to care for. Enjoy them and I will see you in church.

Your Parish Nurse, Helen

