

# THE ANGELUS

Volume 67 Number 2

Christ Episcopal Church • Winchester, Virginia

October 2016

## Rector's Message

Dear People of Christ Church,

This fall stewardship season, we have much to celebrate! We will formally celebrate the successful conclusion of our 2012 Capital Campaign for the major repairs done to our facilities in 2010. We also had wonderful response from the parish for the full renovation of our organ, which we've been celebrating and showing off to the community in recent organ concerts and special services. Gifts and bequests to the parish over the years have made it possible for us to continue to work on much-needed maintenance—making sure Christ Church is a place of worship, formation, and service for future generations. There is much to celebrate because of generations of giving to Christ Church, for which all of us can be thankful.

When we think about stewardship at Christ Church, it's important to point out that, while we have all of this work going on, our operating budget (that is staff, programs, ministries and basic utilities and supplies) does not rely heavily on any endowment. Instead, Christ Church is fortunate to have you, its members, give annually to make our operating budget work. This is a great advantage since many investment returns are slim right now. Our challenge during stewardship season is making sure everyone understands that your level of giving dictates what our budget can or cannot support with regard to growing parish ministries and programs.

A couple of weeks ago, we hosted a concert with Chuck Seipp playing the trumpet and Randy Sheets playing our organ. After wonderful music with Chuck playing a variety of trumpets and Randy showing off the amazing scope of our renovated organ, Chuck did something unexpected. Since Christ Church had hosted a recent workshop for Renaissance trumpets, called "sackbuts," Chuck did a kind of salute to the sackbut with one of his own. It was very simple—a mouth piece and an eight foot long piece of tubing into a plastic funnel. It had its limits, but Chuck did the best he could with what he had.

I sometimes find that we want the annual budget to sound like a trumpet with organ, but at the cost of a make-shift sackbut! We can't pledge the minimum for annual giving and then expect the maximum in our programs. Our challenge this year from our Stewardship Committee is to "walk in love" by taking steps toward generous giving. It was best put at the Vestry meeting by the committee chair, Marty Tabaka, who challenged the Vestry not to simply write the same number on the pledge line this year, but rather to prayerfully consider what to give and, hopefully, a proportional gift means an increase in their pledge for 2017.

*Continued, p. 2*

## Blessing of the Animals

**Sunday, October 2**

3:00 pm in the Courtyard



OCTOBER 2016



### Contents

1	Rector's Message	9	Birthdays & Anniversaries
2	Vestry News	10	Stewardship
3	Asst. Rector's Message	11	Stewardship
4	Christian Formation	12	Finance
5	Christian Formation	13	Finance and Properties
6	Pastoral Care	14	Parish News
7	Music	15	Parish News
8	Calendars	16	Nurse's Musings

## Rector's Message

The Vestry heard the challenge and discussed ways they could increase giving. With the conclusion of four years of Capital Campaign giving, if you had increased your giving to support that campaign, could you now continue to give that increase as part of your annual gift? What does your giving to the church look like compared to other areas where you spend your money (from mortgage to club dues to Starbucks)? How has your pledge changed over the years you've been giving to Christ Church? Has it changed proportionally?

We are a parish FULL of resources and abilities, and I celebrate the gift I have to serve our Lord with you here, through the parish of Christ Church. We are walking a journey of faith which challenges us and presents us with many opportunities to serve Christ in this church and in this community. While the sackbut was fun to listen to, it sounded nothing like the trumpets and organ that closed out playing "Pictures at an Exhibition." Everything at Christ Church, from worship to formation to outreach to our properties, grows and prospers because we give. Thank you for helping us celebrate our parish family and thank you for taking the challenge to walk in love to ensure the celebration goes on!

Faithfully,



The Very Rev. Webster Gibson, Rector  
rector@christchurchwinchester.org

## From the Vestry

### Highlights from the September Vestry Meeting

- Chairman Marty Tabaka outlined the Stewardship campaign which begins in late September. The theme is Walk in Love.
- The new curriculum for Sunday School was introduced. It's DVD-based so additional TVs were purchased as this technology is an essential part of the program.
- A thank you was given to Martha Roberson for coordinating the reception for the Bishop's visit.
- The Vestry approved the Marie Cooper Fund Committee's recommendation to fund the following: \$8000 to Panda Pantry, \$2000 to Habitat for Humanity Interfaith Build, \$10,000 to the Laurel Center, \$10,000 reconstruction of the cathedral school in Haiti, \$2000 to Sop Hunger Now, and \$4000 to Bani mission improvements to the school.

## From the Assistant Rector

Dear Friends in Christ,

*"We don't possess our own lives. I would say we are stewards of the life that God has given us, and for however long God continues to give us breath. I think of it as being loaned back into life after baptism."*

– Brother Curtis Almquist, Society of St. John the Evangelist

I love how Br. Curtis writes that we are loaned back into life after baptism! For me, this gets right to the heart of what it means for me to be a follower of Jesus. That this life that we have been given is ours to be stewards of as we walk the pilgrim's journey of discipleship and that the journey begins in the beautiful waters of baptism. Regardless of our age at baptism, our lives are set on a different path, one with a different set of hopes and expectations, a path with a unique rhythm. So often, I think we find ourselves trying to fit our otherness into the shape of this world. We slip into the habits of trying to mark our days, our relationships, our very being by the standards of this world instead of measuring them by the grace and love of God's Kingdom.

So often in the parables of Jesus, we find that the root of the teaching is about being in right relationship—relationship with one another, relationship with God, relationship with money and possessions, relationship with the world. What Jesus teaches time and again is that we need to be conscious of how we prioritize those relationships. Where the world around us teaches that the goal is to accumulate wealth and possessions, Jesus teaches us to give it all away and to serve one another in loving and compassionate ways. Our call is to use all of who we are in order to do this. What this looks like for each of us is going to be different at times.

Over the next month, as we consider what it means to be stewards of all God has entrusted to us, I invite you to not only prayerfully consider your annual pledge to Christ Church, but how you are also using your life to build relationships that honor God and speak to God's grace and love in this world. These are not either/or parts of stewardship, but they are both/and. We are indeed loaned back into life each with a unique set of gifts and abilities for us to use wisely. We use them to create art and music, to lead businesses, and teach in classrooms; we use them to play sports and to make people laugh; we use them to comfort those going through difficult times and to be compassionate to all. We are stewards of those gifts and abilities; we are stewards of the life that God has given us.

Blessings,



The Rev. Bridget Coffey, Assistant Rector  
bcoffey@christchurchwinchester.org

### YOUTH PROGRAM IN OCTOBER:

October 2: Regular morning, Blessing of the Animals at 3:00 pm, NO evening Youth Group

October 9: Regular morning and Youth Group

October 16: Health Fair Scavenger Hunt (morning), High School Only Pilgrimage Hike following 10:30 am service, NO evening Youth Group

October 23: Regular morning, Youth Group — Special event! Stay tuned...

October 30: Regular morning, NO evening Youth Group

# Christian Formation

## Sunday School News

Our Sunday School year is off to a great start with old friends **and** new faces. Thanks to our hard-working teacher corps and the support of parents, it has been exciting to welcome a lively bunch each Sunday morning so far. **Registration** doesn't end so if anyone hasn't had the chance to fill out a form, just check with your teacher or the Sunday School office, and we'll be happy to help.

Taking the lead for the first quarter with our new preschool–grade 5 curriculum **WHIRL** in our preschool/Kindergarten class is Betsy Pondelik, assisted by Marty and Nancy Tabaka. Grades 1 and 2 are taught by Amy Stock, assisted by Judy Whiting, and grades 3-5 are taught by Julie Constantino, assisted by Dottie Lou Crisp. Teachers for our youth classes are Rebecca Gibson for grades 6-8, assisted by Barry Schnoor, and Sue Jarvis in grades 9-12. All are ready with energy and talent to minister our young people wherever they are in their Christian formation.

Our goal is to give our teachers the opportunity to rotate throughout the year, so still consider if you might be able to offer six weeks of leadership to our children and youth. Also, of course, we encourage and welcome volunteers to substitute. It's easy, a short commitment, and lots of help is provided.

**Children's Chapel** is also back in session on the second floor of the Parish Hall from 10:30 am until the Peace each Sunday. We welcome children ages 3-7. Come every Sunday or just occasionally; no registration is required. The service is child-size and allows our young parishioners to explore the same gospel we hear in the Sanctuary service with more opportunity to wiggle and talk. Our leaders this year are Ashley Haines, Steve Haines, and Amy Whipkey. Parents, they would love an extra pair on hands any Sunday morning you would like to join them!

**And, new this year...**Preschool/Kindergarten classes through fifth grade will begin each Sunday morning by gathering in the Children's Chapel upon arrival. 9:15 am to 9:30 am is "warm-up" time to prepare for the upcoming lesson with our new curriculum. At 9:30 am, the Cherub Choir aged children will remain in the chapel for their music segment, while grades 2-5 will join their teachers in their classrooms.

**AND**, to meet the needs of our youngest Sunday Schoolers, we have added a **Toddler Group** from 9:30 am -10:15 am in the Sunday School area. It provides lots of time for fun and supports our children as they take their first steps of faith. Parents are being asked to sign up to take turns as the "lead" parent. Look for the sign-up sheet in the Sunday School Commons!



## Christian Formation

### Adult Daytime Faith Study

We are exploring the Old Testament using the Great Courses DVD, “The Old Testament.” The most recent lectures in this program are about the book Exodus. The study meets in the Parlors at 10:00 am on the 2nd and 4th Thursdays of each month (October 13 and 27). All are welcome to join us! Questions, please call the Church Office (540-662-5843) or email Webster at [rector@christchurchwinchester.org](mailto:rector@christchurchwinchester.org).

### Adult Forum in October

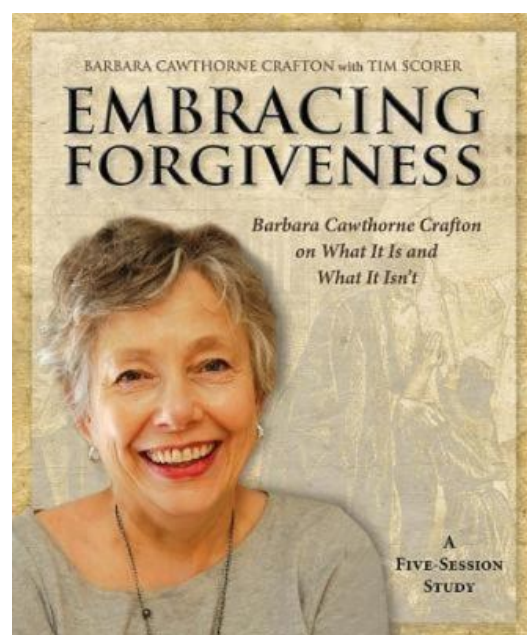
Adult Forum meets on Sunday mornings through the program year in the Tilford Room at 9:30 am. There is no registration required, so please join us when you can.

Our forum this fall will have two parts. The main part of the program will use the DVD series, “Embracing Forgiveness: What It Is and What It Isn't,” by Barbara Cawthorne Crafton. This is part of *The Embracing Series*, which we have used on such topics as the prophets and in conversations about adult faith.

*“With wisdom, wit, and theological depth Barbara Cawthorne Crafton explores the perennial topic of forgiveness from the perspective of gift rather than duty. Along the way, she exposes patterns of resistance and popular understandings that undermine our ability to receive and share the gift with others...”*

—Frank T. Griswold, 25th Presiding Bishop of the Episcopal Church

The other part of Adult Forum will feature occasional speakers. Guests will be announced in the Angelus and Sunday bulletins.



## *The Tri-Diocesan Council on Aging Annual Fall Camp at Shrine Mont*

*October 24-27, 2016*

*Key Note Speaker: The Rev. Barbara Crafton*

Fall Camp is an opportunity to spend time in the mountains of Virginia with other seniors (there isn't an age requirement). The Camp is an attempt to take seriously the spiritual needs and journeys of primarily retired people. We attempt to challenge participants through keynote speakers, workshops, worship and interaction with one another. We worship together in daily sessions, explore various issues, and participate in one or two session workshops (each session is an hour and a half) on a variety of topics. A social “half-hour” is held before dinner with appetizers provided by a different diocese each evening. There is plenty of time to sit on the porches, visit with friends, relax, and enjoy the amazing scenery and to explore the surrounding area. Please call the Church Office (540-662-5843) if you would like a registration form.



## Pastoral Care

### About the Discretionary Fund

Clergy discretionary funds are a well-established tradition in the Episcopal church, but one that is not well understood. Most of us are correctly aware that the discretionary funds are used to help the poor. Many, incorrectly, believe that discretionary funds may be spent absolutely any way the clergy wish.

The principle purpose of the discretionary fund is to aid the poor and assist members of the parish and the larger community who are in need. The discretionary fund may also be used for any legitimate business of the parish as long as it does not personally benefit the members of clergy who are authorized to distribute the funds. However, from a stewardship prospective, the discretionary fund should not be used for activities that rightfully belong to the operating budget. For example, the speaker's honorarium for the parish weekend should be paid out of the parish weekend budget, and not the discretionary fund.

The discretionary fund is maintained through designated gifts to the discretionary fund. The Vestry voted last year to restore the practice of having the unspecified plate offerings on the first Sunday of each month go towards the discretionary fund. Contributions to the church are always welcome, especially to either the General or the Discretionary Fund. These contributions are made preferably through checks payable to "Christ Episcopal Church" with the fund specified in the memo line. Such contributions are tax deductible.

Please note that any checks written as payable directly to the clergy (or any cash specifically addressed to the clergy), by IRS rules, must be declared as income, just as tips are income to wait staff. Such gifts to the clergy are not tax deductible.

### The Flower Ministry

The Flower Ministry was started over a year ago and we have enjoyed both providing flowers for Wednesday services in the Pilgrim's Chapel, and delivering the Sunday Altar Flowers to shut-ins or patients in the hospital. It's a fulfilling, creative ministry and we would love to have more people involved!

Both jobs take as much time as you are willing to give. Do not think that you can't participate because you don't know how to make arrangements or you don't have the time. Flowers are lovely no matter how they are displayed. Arrangements can be as elaborate as you want or as simple. You will learn just by doing.

We would love to have the Flower Ministry run much like the Altar Guild. There would be men, women, couples, teenagers, etc. assigned a month to either provide Wednesday flowers, deliver Sunday flowers, or both.

If you are interested, please call or email Katie Harvard (klhwsh@yahoo.com or 757-999-3816).





# *Choral Evensong*

## **with Ronald Stolk**

Presented by  
the Winchester American Guild of Organists  
At Christ Episcopal Church  
Sunday, October 2, 2016 ☞ 5:00 pm

The tradition of prayer at set hours goes back to the earliest Christians, who followed Jewish tradition, and is known among Anglicans as the Daily Office and among Roman Catholics as the Liturgy of the Hours. Evening Prayer features a hymn, a selection from the Psalms, a Scripture reading, the Magnificat, prayers, and an anthem. All are invited to join in the singing of the service; the anthem will be sung by our musical guests.

Ronald Stolk will lead the music and play the organ. Mr. Stolk, a Rappahannock resident, hails from the Netherlands, studied in The Hague and Paris, and is a laureate of several competitions in Europe and the United States. He is Director of Music of St. Patrick Catholic Church in Washington, DC, and teaches organ at the Catholic University of America and George Mason University.

WAGO members and members of our church choirs are invited to participate as members of the evensong choir. This is one of several events in a series celebrating the newly rebuilt organ at Christ Church. We will meet at 3:00 pm, rehearse until 4:30 pm, and present the service at 5:00 pm. A reception will follow in the Parish Hall.



## Calendar and Upcoming Events

### Church Services

#### Sunday

Holy Communion Rite I 8:00 am  
Holy Communion Rite II 10:30 am

#### Wednesday

12:00 pm Pilgrim's Chapel  
(Healing Service 3rd Wed)

#### Second Monday

6:30 pm Special Needs—Sanctuary

### October

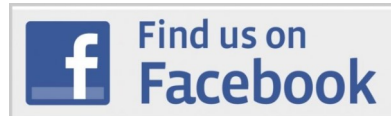
- 2 Rummage Sale Meeting at 11:30 am,  
Blessing of the Animals at 3:00 pm,  
WAGO Choral Evensong at 5:00 pm
- 16 Heath Fair at Christ Church
- 21-22 Rummage Sale in the Parish Hall
- 24-27 Annual Fall Camp at Shrine Mont

### Committee & Group Meetings

Adult Choir Rehearsal	Wed: 7:00 pm
Adult Forum	Sun: 9:30 am
Alleluia Singers	Sun: 8:45 am
Daytime Faith Study	2nd/4th Thurs: 10:00 am
Knit Unto Others	3rd Tues: 2:00 pm
Lectionary Bible Study	Wed: 10:30 am
Men's Fellowship	2nd Sat: 7:30 am
Outreach Committee	4th Tues: 7:00 pm
Properties Committee	3rd Tues: 7:00 pm
Treasure Box	Wed & Fri: 10 am-4 pm
Vestry	2nd Tues: 7:00 pm
Women's Bible Studies	Tues: 10:45 - Noon Thurs: 6:30 pm – 7:45 pm
Youth Group	2nd/4th Sun: 6:00-7:30 pm

#### *Children's Chapel*

Join us on the 2nd floor of the Parish Hall from 10:30 am until the Peace. We welcome children ages 3-7. No registration is required. The service is child-sized and allows our young parishioners to explore the same Gospel we hear in the Sanctuary but with more opportunity to wiggle and talk! Our Children's Chapel leaders always welcome an extra pair of hands if you would like to join them!



**Look for Christ Episcopal Church  
Winchester and like us to stay up-to-date  
on the latest news!**

**The Rector's day off is Friday.  
The Assistant Rector's day off is Monday.  
Church Office Tel. 540-662-5843**



## September Birthdays

- 2 James Baden
- 3 Elena Conrad
- 4 Bettie Johnston, Patricia Barnes,  
Martha Roberson, Danielle Armstrong
- 5 Janine Higgins, Gwynne Koonce,  
Daniel Gibson
- 6 Deanna Pifer, Jennifer Pettit
- 7 Steve Johnston
- 8 Rosemary Swope, Pam Kennedy,  
Dan Gloster
- 9 Loretta Johnston, Sarah Purdy
- 10 Pam DeBergh
- 11 Grace Howard
- 14 Margaret Kesser, Sarah Bower,  
Edward Browning V
- 16 Dick Arculin
- 17 Mary Beth Compton
- 18 Pat Riley
- 19 Robert Riggs
- 20 Katy Schain, John Wiedower,  
Reed Wiedower
- 22 Susan Howard, Mona Pressley,  
John Applin
- 23 Barbara Austin
- 26 Rachel Rickenbaker, Bill Thompson,  
Tom King
- 27 Doris Trant
- 28 Cathie Waldie
- 29 Judy Whiting
- 31 Amy Stock, Frank Armstrong III,  
Sue Jarvis



## Wedding Anniversaries

- 7 Ned & Amy Stock
- 8 Dennis & Debra Shows
- 14 Bill & Sue Jarvis
- 18 Frank & Barbara Rupert
- 21 Al & Susan McGilvray
- 27 Robert & Marrea Riggs

celebrate!



## Body & Soul Health Fair

Hosted by Christ Episcopal Church &  
Grace Evangelical Lutheran Church

Sunday, October 16, 2016 from 8:30 am—12:30 pm

Christ Church Parish Hall, 132 West Boscawen St., Winchester

### Please Note:

We will publish birthday and anniversary information only with explicit permission. Please contact the Church Office if you wish to be added to or deleted from these lists. Please keep the Church Office informed of any changes to your address, phone numbers and e-mail addresses. Please let the office know the school addresses of our college students.

## Stewardship



We are grateful for the ways that you already “walk in love.” You are faithful in your presence, witness, and generosity help to sustain our ministries and our life together. Thank you. “Walk in love” is a call to us to keep taking steps to imitate Jesus in a way that focuses on the actions of God among us and the actions and movements of God within us. It is a call to respond proportionally, step for step.

In the coming weeks, you will hear stories from people who share the pews with you at Christ Church and who walk deeply in many ministries here. We encourage you to listen and prayerfully consider the impact the ministries at Christ Church offer to each of us and to our community. And then, discern your responsibility to use the gifts God gives you to do the work God calls you to do. Come to Christ Church for worship, sit in your favorite pew, and be led by God to connect in the many ways we are fed through Jesus Christ to go out and “walk in love” with our Lord!



*“Having moved here four years ago from Pennsylvania, we are grateful that Christ Church makes us feel welcome and provides many opportunities to become part of the Winchester community through local outreach initiatives (Panda Pantry, Salvation Army dinners and Angel Tree, WATTS). We appreciate the fellowship opportunities like coffee hours, OWLS, parish weekends at Shrine Mont, and bingo socials which have helped us become friends with so many.*

*We are also thankful for the solid worship, good preaching, Sunday morning adult education (especially the course on the Muslim faith), Tuesday morning Bible study, and the intercessory prayer chains which help us grow in our faith. It is a blessing to be members of a faithful parish which makes Christ known through words and deeds.”*

*Robb and Cathie Russell*



*“Walk in Love. What a wonderful theme for our Stewardship Campaign! Christ Church, in many more ways than one, has been for me the core of walking in love. When asked about why Christ Church fills such an integral part of my being and why I pledged my financial support, I was torn among many—but especially three—topics: Christ Church’s Outreach Program; Christ Church’s clergy and its open and welcoming members; and, finally, how our music program contributes so hugely to our singular and collective ability to actually walk in love.”*

*Jeremy Welts*

## Stewardship

Proportional giving is offering to God, in a committed and faithful manner, a portion of what God has given us. The Biblical guideline for tithing is ten percent of one's income, given in gratitude for God's blessings and to further God's work in the world. Giving a percentage of our income—increasing each year toward or beyond the tithe—is a process that helps deepen our awareness of the abundance of God's love. Here is a chart which shows proportional giving from 2% to 15% monthly. If you would like to use an online calculator to evaluate proportional giving options for your family, please visit: <http://www.nacba.net/documents/tithe.htm>



annual income	Monthly Giving Guide				tithe		
	2%	4%	6%	8%	10%	12%	15%
\$ 20,000	\$ 33	\$ 67	\$ 100	\$ 133	\$ 167	\$ 200	\$ 250
\$ 40,000	\$ 67	\$ 133	\$ 200	\$ 267	\$ 333	\$ 400	\$ 500
\$ 60,000	\$ 100	\$ 200	\$ 300	\$ 400	\$ 500	\$ 600	\$ 750
\$ 80,000	\$ 133	\$ 267	\$ 400	\$ 533	\$ 667	\$ 800	\$1,000
\$ 100,000	\$ 167	\$ 333	\$ 500	\$ 667	\$ 833	\$1,000	\$1,250
\$ 150,000	\$ 250	\$ 500	\$ 750	\$1,000	\$1,250	\$1,500	\$1,875
\$ 200,000	\$ 333	\$ 667	\$ 1,000	\$1,333	\$1,667	\$2,000	\$2,500
\$ 250,000	\$ 417	\$ 833	\$ 1,250	\$1,667	\$2,083	\$2,500	\$3,125
\$ 300,000	\$ 500	\$ 1,000	\$ 1,500	\$2,000	\$2,500	\$3,000	\$3,750

### Christ Church 4th Annual



**Thursday, November 3 at 5:30 pm  
in the Tilford Room**

The Stewardship Committee is hosting the always enjoyable Oktoberfest Fellowship dinner. All are welcome for a night of German food and fun.

This is a BYOB event—feel free to bring your favorite German beer or wine! The menu will include: brats, pork loin, applesauce, sauerkraut, potatoes, and dessert. Coffee, tea and soft drinks will be provided.

Please RSVP by October 27. A sign up sheet will be located in the Tilford Room, or call the Church Office (540-662-5843) if you plan to attend. Join the fun!



## From the Committees

### Finance Committee

#### 2016 Budget & Actual

Revenues: Even though unpledged revenue is down, total revenues are about \$4,900 above budget.

Expenses: Though some expense line items were above and some were below budget, in total, we were about \$3,600 below budget through August.

Balance: Consequently, even though actual expenses exceed actual revenues by \$40,600, we are still better than budget by almost \$8,500.

YTD Through August 2016	Actuals	Budget	Difference
<b>Revenues</b>			
Pledged	\$295,950.17	\$284,800.00	\$11,150.17
Unpledged	\$28,188.54	\$35,100.00	\$(6,911.46)
All Other	\$14,002.47	\$13,380.00	\$622.47
Total	\$338,141.18	\$333,280.00	\$4,861.18
<b>Expenses</b>			
Personnel	\$269,241.50	\$270,996.52	\$(1,755.02)
Utilities	\$17,317.78	\$19,450.00	\$(2,132.22)
Property/Maintenance	\$30,595.35	\$29,453.00	\$1,142.35
Office	\$19,285.21	\$15,319.00	\$3,966.21
Christian Education	\$6,510.91	\$8,194.00	\$(1,683.09)
Music	\$5,899.05	\$4,680.00	\$1,219.05
Worship	\$483.04	\$725.00	\$(241.96)
Stewardship	\$158.81	\$-	\$158.81
Outreach	\$26,179.00	\$29,225.00	\$(3,046.00)
Pastoral Care	\$318.42	\$580.00	\$(261.58)
Parish Life	\$473.89	\$1,215.00	\$(741.11)
Communications	\$2,289.98	\$2,532.00	\$(242.02)
Total	\$378,752.94	\$382,369.52	\$(3,616.58)
Net Total	\$(40,611.76)	\$(49,089.52)	\$8,477.76

#### Funding Recent Projects

Recent properties and maintenance projects have included:

- Painting the roof of the Sanctuary and Old Rectory
- Painting the outside trim of the Sanctuary stained glass windows
- Painting the metal handrails at the Sanctuary and in the courtyard
- Removing the asbestos pipe insulation in the Sanctuary basement

## From the Committees

### Finance Committee, Continued

The painting costs were \$20,491 in total and the asbestos removal cost \$11,030.

**Question:** If current expenses EXCEED revenues by \$40,600, how can we afford to pay over \$31,500 for these recent projects?

**Answer:** We CANNOT afford to pay for these projects out of our operating budget! We have to utilize our investment funds (savings) or else borrow money from a bank.

Rather than borrow money from a bank and incur interest expense, it was decided to use funds from our investment accounts to pay for several important projects that the Properties Committee had identified. For these recent projects mentioned above, the Sanctuary Fund was used to pay for all expenses directly associated with the Sanctuary building and the Unrestricted Endowment Fund was used to pay for expenses elsewhere (courtyard and Parish Hall).

**Question:** Will using investment funds for these projects deplete our “savings”?

**Answer:** Yes, it will deplete our “savings” (or investment) funds total a bit, but it insures that our investments in buildings and properties remain sound.

Many of our investment funds, such as the Sanctuary Fund, were established to be used, not just left as an investment account. A main purpose of the Sanctuary Fund is to preserve, care for, and enhance the Sanctuary building. Therefore, painting the roof to prevent water damage, painting the wood trim around stained glass windows, and removing asbestos from the basement align well with the purpose of the Sanctuary Fund.

**Question:** How do we learn more about our investment funds?

**Answer:** More information about the Sanctuary Fund and all our investment funds will be available soon, either in a future Angelus article or some other form of communication.

### Properties Committee

Update on current projects:

- We have completed and paid for Sanctuary and Old Rectory roof painting.
- We will have a future report on church basement work.
- The organ humidifier is installed.
- Reading Landscape will take a look at replacing the boxwoods in the courtyard.
- Several masonry repairs are ongoing.
- The committee recommends an annual property inspection.
- The committee has gathered a good group of contractors to do the various projects.
- Andrew Boyd, a local architect, has agreed to draw up plans for the Old Rectory porch pro bono.

## Parish News

### Christ Church Annual Rummage Sale



#### Sale Hours

Friday, October 21 from 4 pm–9 pm  
& Saturday, October 22 from 9 am–1 pm

#### Silent Auction

Beginning Sunday morning, October 2nd, and running through the 16th, will be our 2nd Rummage Sale silent auction. Auction items will be on display and open for bidding in the Tilford Room on the 2nd and the 9th. (Auction items will be in the Pilgrim's Chapel on the 16th due to the health fair). Some of the donations up for auction this year include:

- *A ca. 1890-1900 set of antique chairs*
- *Moet et Chandon a Epernay Cuvee Dom Perignon Vintage Champagne-1985*
- *A Vintage North American Co. Angel Bear*
- *Framed Chinese watercolor painting on silk*
- *P. Bucklely Moss, "Our National Treasures"...14 x 26, framed print*
- *Donated art by local artist*

A brief **organizational meeting** for those working, or interested in working, the 2016 rummage sale will be held after the 10:30 service on Sunday, Oct. 2nd, in the parlors. The meeting should last no more than 30 minutes with important planning topics to be shared by Chris & Melissa Ferguson. We need volunteers in the following categories:

- Set up and take down of the Tilford Room the entire week before through the end of the sale
- Pricing of all items donated for sale
- Cashiers
- Floor monitors to help customers and answer questions
- Delivery volunteers for larger items
- Drivers to pick up and deliver large donations to the church
- Posting of advertising flyers in area businesses or your own business
- Support for and donation of baked goods to sell
- Kitchen support and clean up (please see Dan Wall)
- Official greeters

Thank you for your continued support of this important fundraiser and wonderful opportunity for fellowship. If you have any questions about the Rummage Sale, please call Chris or Melissa Ferguson at the numbers above.

**Plan now! We need bakers and helpers for the Rummage Sale Bake Sale.** All items big and small accepted (pies, cakes, cookies, brownies, candies, breads, jams, produce from the garden). Please package smaller items three to a bag in baggies or plastic wrap with ribbon. Bring to kitchen in Tilford Room by Friday afternoon (Oct 21). If you can help man the bake sale table during the sale, please contact Sharon Lower ([sharonlower45@gmail.com](mailto:sharonlower45@gmail.com) or 540-539-2202 (call or text) or Karey Starnes ([kstarnes1904@comcast.net](mailto:kstarnes1904@comcast.net)).





## Parish News

### Men's Fellowship Meets

Christ Church's Men's Fellowship held its monthly meeting on September 17 in the Tilford Room. Prior to discussion about the spiritual aspects of the movie *The 33* (a film about the 2011 69-day entrapment of Chilean gold miners), a breakfast feast was prepared by T.C. McFall with Dennis Shows, Marty Tabaka, and Chris Ferguson assisting. The nine participants shown in the photograph are, left to right, Chris Ferguson, Dennis Shows, Roger Zebarth, "Chef" McFall, Tom King, Gary Sheppard, Jim Taylor, Gil Kesser, and Marty Tabaka. The photo was taken by Gardner Bates. Other participants who arrived in time for breakfast, but unfortunately, not the photo were: Bruce Duerson, Jamie Eppes, Webster Gibson, and Bill Old. The Men's Fellowship meets the second Saturday of each month at 7:30 am, with breakfast provided. The topic to be discussed at the October 8 meeting is "giving."



### CCAP Collection for October



In October, we will collect toilet paper and paper towels for the CCAP staff to use as they carry out their work to help the needy. CCAP (Congregational Community Action Project) is a ministry of 46 worshipping communities in Winchester and Frederick County that have come together to support our neighbors in need with financial, material, and other assistance. There is a bookshelf in the foyer of the Parish Hall marked CCAP. Please leave items there and thank you for your generosity!

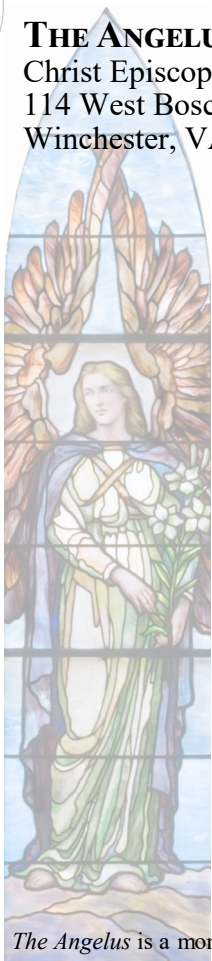


The Treasure Box's Fall Grand Opening is underway! We have a nice selection of brand-name women's clothing. Top quality items leave the shop almost immediately, so we invite the extended family of parishioners and friends to stop in to browse. We could still use more men's shirts, jackets, and outerwear, as well as useful household items. Bedding and towel sets are very good sellers. Also, we especially need a refreshed stock of CDs and DVDs, so please think of the Treasure Box if you can donate some of these items. We also have some great Halloween items!

The Treasure Box is open Wednesdays and Fridays from 10 am—4 pm at 114 W. Boscawen St.

**THE ANGELUS**  
Christ Episcopal Church  
114 West Boscawen St.  
Winchester, VA 22601-4116

Non-Profit  
Organization  
U.S. Postage Paid  
Winchester, VA  
Permit No. 216



*The Angelus* is a monthly publication of Christ Episcopal Church.

## Parish Nurse Musings

Two items this month.

1. I spent a great day at a Parish Nurse Retreat on meditation and prayer. I learned several things I want to share with you. First, research is showing that meditation may help people recover from strokes and may diminish the dementia problem. It is suggested that you meditate for 12 minutes each day. The easiest is to just take three big breathes in and shut your eyes and fold your hands in your lap. Do not lie down. Just relax and say the word "God" slowly as you breathe in and out. You can ask God for anything you want or just say His name. I also found out that meditation reduces the number of negative thoughts the brain receives daily. There are 60,000 thoughts sent to the brain daily and for most people 85% of them are negative. Think of negative thoughts and emotions as Velcro and positive thoughts and emotions as Teflon. If you want more information or help please let me know.

2. Flu season is upon us. We will be giving flu vaccine each Sunday after services until I run out. They are \$11 per shot. Save the Medicare money for our children and come get an \$11 shot from the Parish Nurse Office!

Have a great day and see you next month!

Your Parish Nurse, Helen

